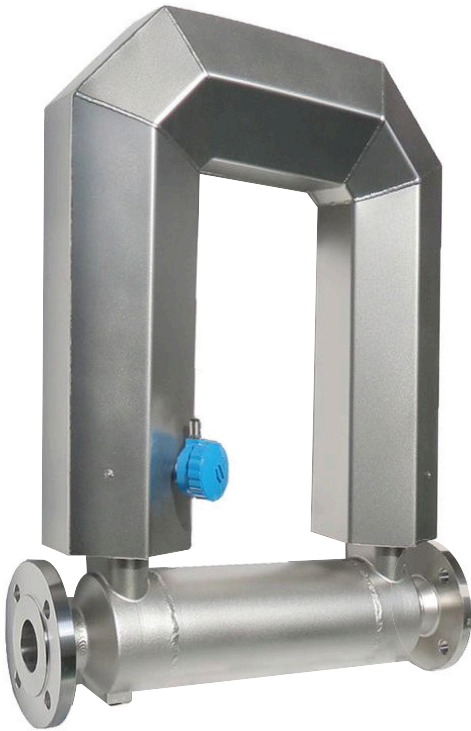


MASS FLOW METER



COMMON SPECIFICATIONS

Liquid accuracy	±0.2%	Ingress protection	IP67
Gas accuracy	±0.5%	Warranty	2-year
Temp. accuracy	±1°C ±0.5% of reading	Certificate	CE, ATEX
Density accuracy	±0.002g/cm3		

Specifications of sensor		Specifications of transmitter GESF231 (with bracket)	
Fluid temperature	-70~+160°C	Operating temp.	-30°C~+60°C
End connection	Flange, DIN2635 PN40	RH	≤95%, non condensing
Vibrating tube	Stainless steel 316L	Atmospheric Pressure	86~106 kPa
Sensor housing	Stainless steel 304	Operating voltage	220VAC or 24VDC
Splitter & flange	Stainless steel 304	Comm. & output	RS485 Modbus RTU, Pulse
Ex-mark	Ex II 2G Ex ib IIC T6...T1 Gb	Ex-mark	Ex II 2G Ex db [ib] IIC T6...T1 Gb

Mass Flow Meter MF-80	
Model No.	GESPASA MF-80
Max. flow rate	180t/h
Nominal diameter	80mm
MWP.	4MPa
Zero stability	7.05kg/h
Repeatability	0.10%
Package size	1080*900*510mm
G.W.	111kgs
Flange size	3"

Mass Flow Meter MF-100	
Model No.	GESPASA MF-100
Max. flow rate	260t/h
Nominal diameter	100mm
MWP.	4MPa
Zero stability	12kg/h
Repeatability	0.10%
Package size	1360*900*500mm
G.W.	161kgs
Flange size	4"

*Por las constantes innovaciones y desarrollo, TOT COMERCIAL, SA se reserva el derecho de modificar las especificaciones de sus productos y publicidad, sin previa notificación.



Partida Horta d'Amunt s/n
25600 Balaguer (Lleida) · Spain
+34 973 451 072

www.gespasa.es
gespasa@gespasa.es

